



BUILDER SPECIFICATION UPDATE NO 8

GC32 - Lower Hinge

Revision:

Date	Status	Editor
12-01-2017	First Version	SD
16-01-2017	Feedback class	CS
19-01-2017	Final version Approved by class	SD

This update and information is given in accordance of the GC32 Racing Rules.

Goal:

The purpose of this change is to avoid movement in the hinge, loosening of the bolts and leakage along the lower hinge bolts.

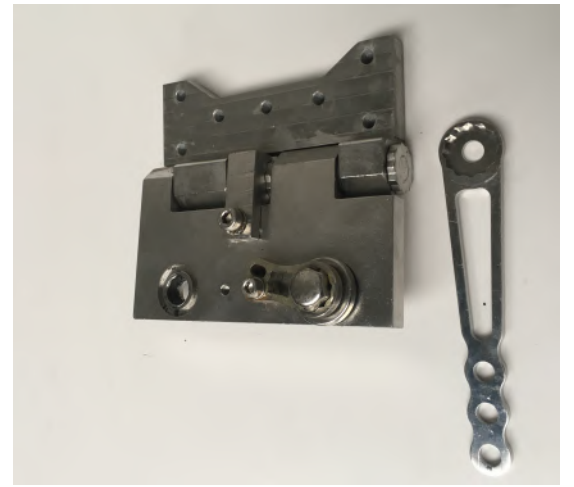
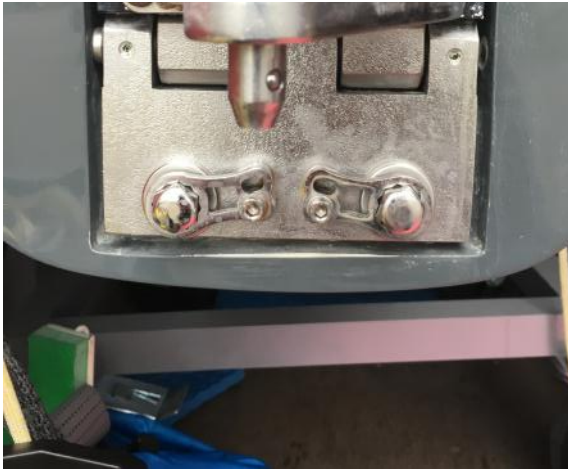
To avoid this, it is believed that it is key to add locking devices to the hinge, and to add a material part, which seals the space around the bolts. TGC (The Great Cup), Suggest to add a bottom Hinge horizontal pin locking device to avoid movement in pin, a bottom hinge bolts Lock system, to avoid the bolt to unscrew and a double O rubber ring to avoid use of Sykaflex for the hinge bolts.

Procedure:

- The hinge is fully redesigned, none of the existing parts can be used.
- TGC has new hinges available.



Annex



The information contained in this message and or attachments is intended only for the person or entity to which it is addressed and many contain confidential and/or privileged material. Any review, retransmission, dissemination or other use of, or taking of any action in reliance upon, this information by persons or entities other than the intended recipient is prohibited.