



## GC 32 – Cunningham dead-end solution

Date: 02-12-2016

Goal: The purpose of this change is to have a ONE DESIGN solution, to attach the dead-end of the Cunningham line.

Therefore Southern Spars came with the following solution.

It is important to understand that TGC WILL NOT be hold responsible for any damages.

### **Procedure:**

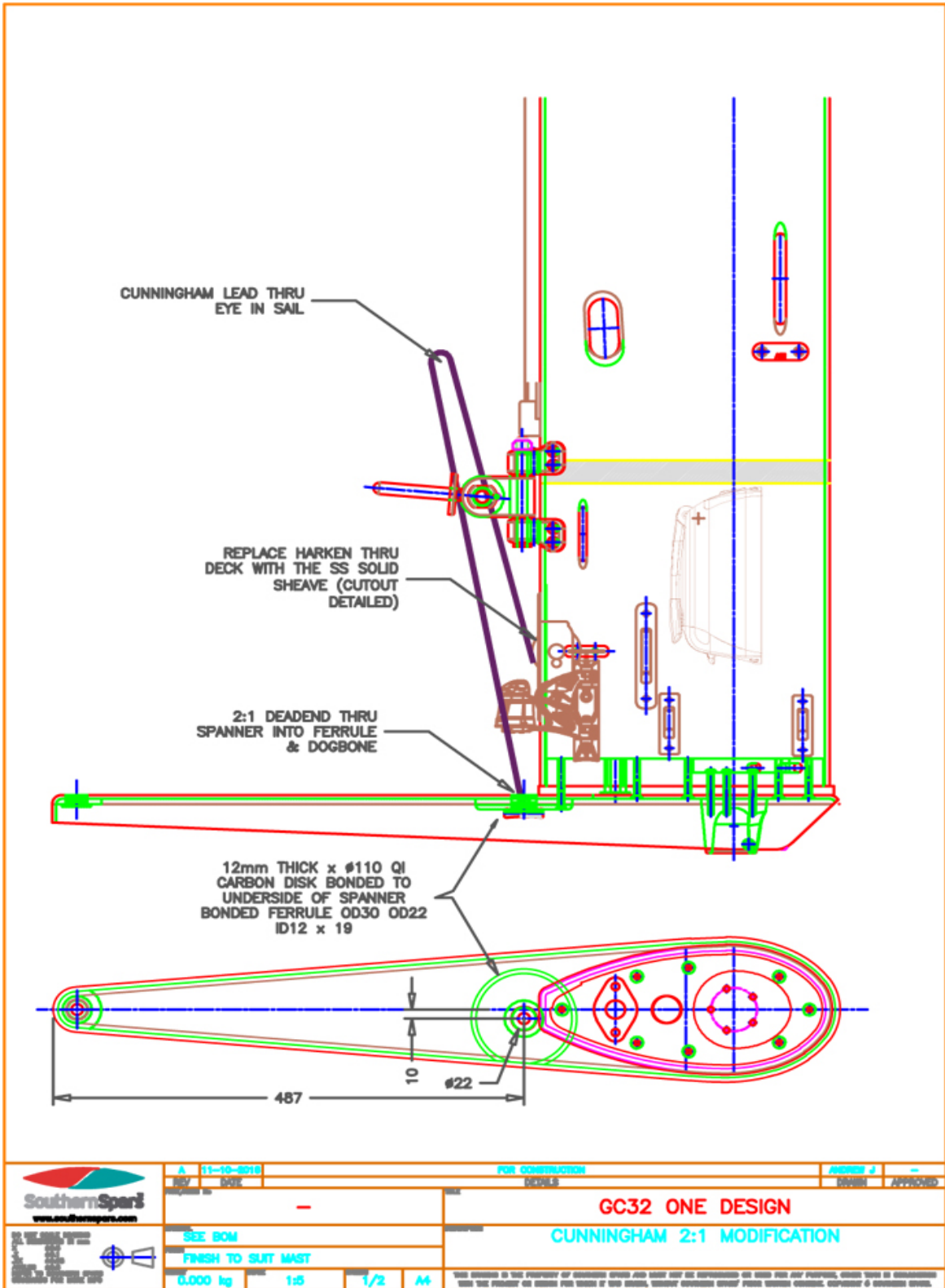
Standard boat and spar building methods to be used, such as surface preparation etc.

### **Installation instruction on Mast rotation arm**

1. Bond a 12mm thick x Ø110mm QI CARBON DISK on the underside of the spanner as per drawing.
2. Drill a Ø22mm hole as specified by drawing in the center of the disc through the spanner.
3. Bond a FERRULE OD30 OD22 ID12 x 19 as per drawing.

### **Attaching the Cunningham dead end**

1. If the mainsail is hoisted, than lead the dead-end thru the mainsail tack ring.
2. Feed the dead-end thru the ferrule.
3. Than lock the dead-end with a Cunningham dead-end dogbone, on the bottom of the mast rotation arm.



The information contained in this message and or attachments is intended only for the person or entity to which it is addressed and many contain confidential and/or privileged material. Any review, retransmission, dissemination or other use of, or taking of any action in reliance upon, this information by persons or entities other than the intended recipient is prohibited.